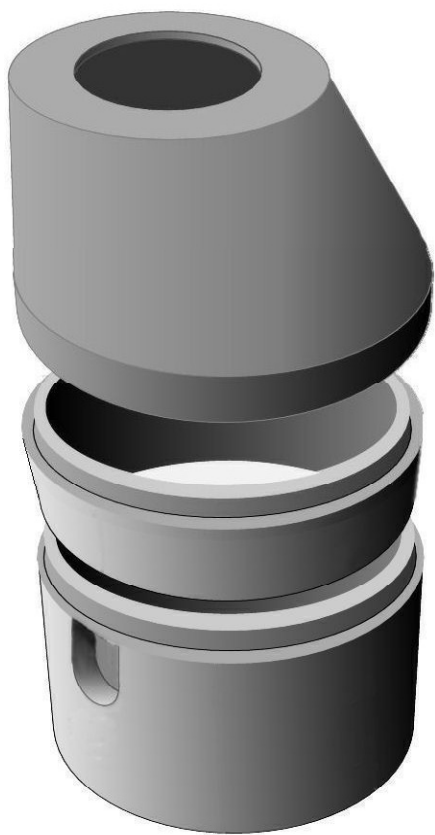
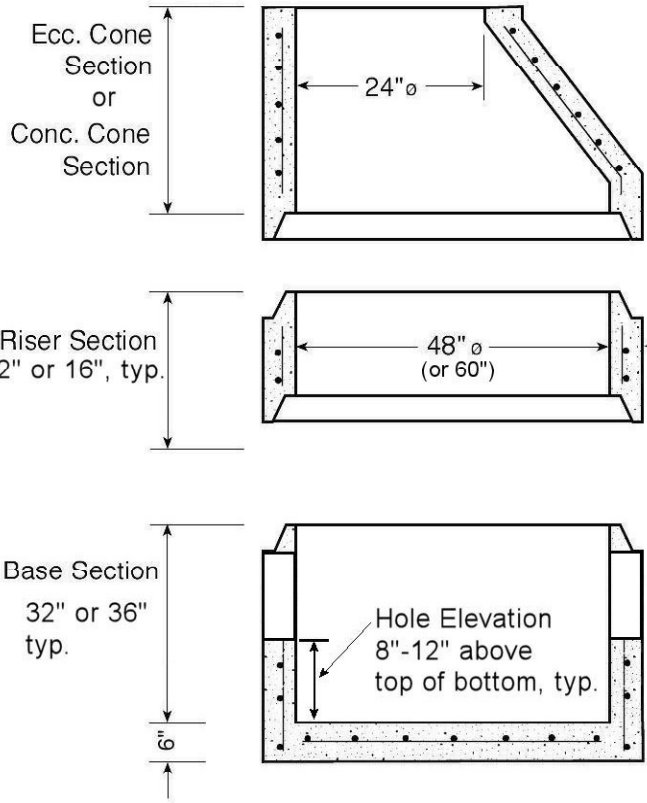


**Valve Vault for 48" or 60" Dia.**



Holes are 180°, typ.

**-No Scale-**  
All dimensions subject to allowable specification tolerances.

WALLS TO MEET/EXCEED  
**ASTM C-478**

THE MINIMUM STRENGTH OF THE CONCRETE IN THE BASE AND RISER SECTIONS SHALL BE 4000 P.S.I. AFTER 28 DAYS. THE MINIMUM WALL THICKNESS SHALL BE ONE-TWELTH OF THE INTERNAL DIAMETER OF THE RISER. THE CIRCUMFERENTIAL REINFORCEMENT IN BASE SECTIONS AND RISERS MAY CONSIST OF EITHER ONE OR TWO LINES OF STEEL. THE TOTAL AREA OF STEEL PER VERTICAL FOOT SHALL BE NOT LESS THAN .0025 TIMES THE INSIDE DIAMETER IN INCHES. BASE SLABS OR FLOORS SHALL BE REINFORCED WITH A LAYER OF STEEL WITH A MINIMUM AREA OF 0.12 in. SQUARED / LINEAR FOOT IN BOTH DIRECTIONS.

**Materials**

CONCRETE: 4,500 PSI  
(State of IL Specification)

WALL REINFORCING:  
per ASTM C-478 Standard.

BOTTOM SLAB REINFORCING  
#4 @ 12" O.C.E.W.

Unit Weights (48")	
Wt./ Vert. Ft.	876 lbs.
Base Bottom	955 lbs.
Wall Thickness	5 in.

Unit Weights (60")	
Wt./ Vert. Ft.	1308 lbs.
Base Bottom	2149 lbs.
Wall Thickness	6 in.

TITLE
<b>48" and 60" Dia. Valve Vault with Integral Bottom</b>

